



Performance Report for: <https://website.joomla.com/>

Report generated: Thu, Jan 4, 2024 6:57 AM -0800
 Test Server Location: Vancouver, Canada
 Using: Chrome 117.0.0.0, Lighthouse 11.0.0

A	Performance	Structure	L. Contentful Paint	T. Blocking Time	C. Layout Shift
	95%	94%	1.2s	0ms	0

Top Issues

IMPACT	AUDIT	
Med	Eliminate render-blocking resources <small>FCP LCP</small>	Potential savings of 504ms
Med	Serve static assets with an efficient cache policy	Potential savings of 471KB
Med-Low	Use a Content Delivery Network (CDN)	19 resources found
Low	Use HTTP/2 for all resources	Potential savings of 160ms
Low	Avoid an excessive DOM size <small>TBT</small>	394 elements

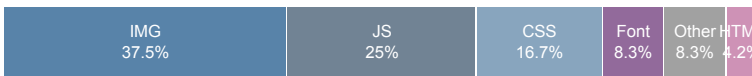
Page Details



Total Page Size - 502KB



Total Page Requests - 24



■ HTML
 ■ JS
 ■ CSS
 ■ IMG
 ■ Video
 ■ Font
 ■ Other

How does this affect me?

Today's web user expects a fast and seamless website experience. Delivering that fast experience can result in increased visits, conversions and overall happiness.

As if you didn't need more incentive, **Google has announced that they are using page speed in their ranking algorithm.**

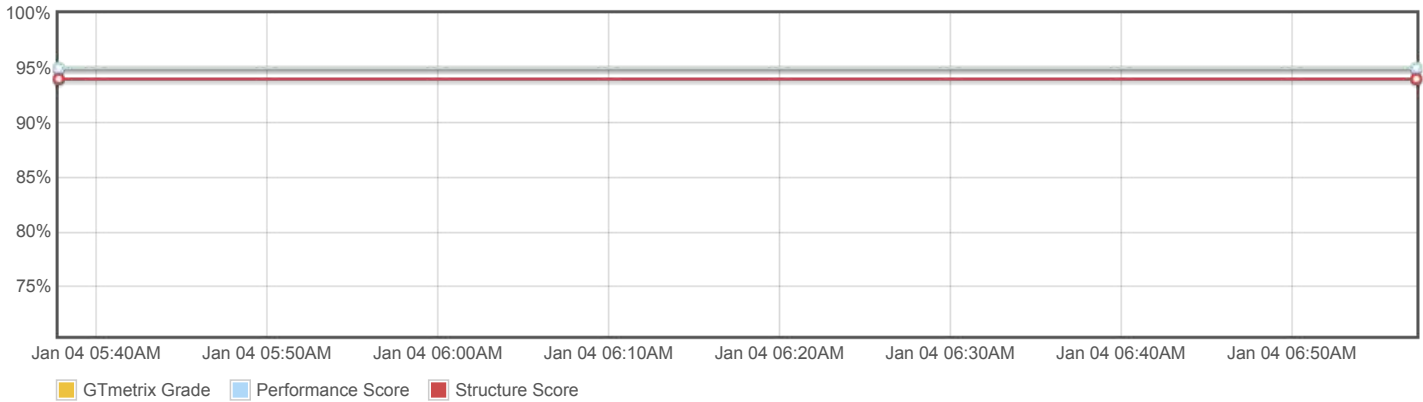
About GTmetrix

CARBON60
THE MANAGED CLOUD COMPANY

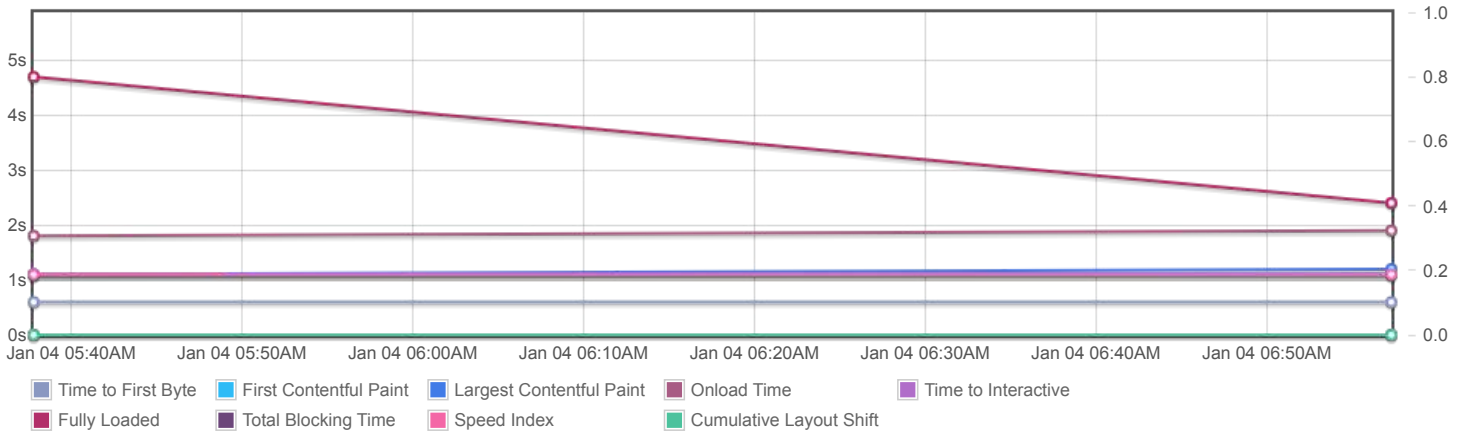
GTmetrix is developed by the good folks at Carbon60, a Canadian hosting company with over 28 years experience in web technology.

<https://carbon60.com/>

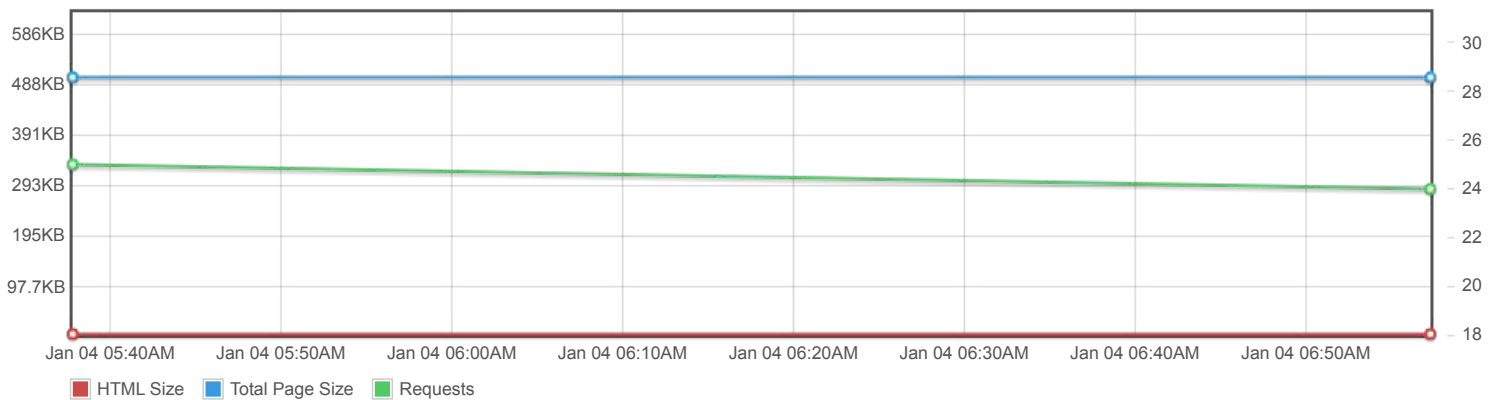
Page scores



Page metrics

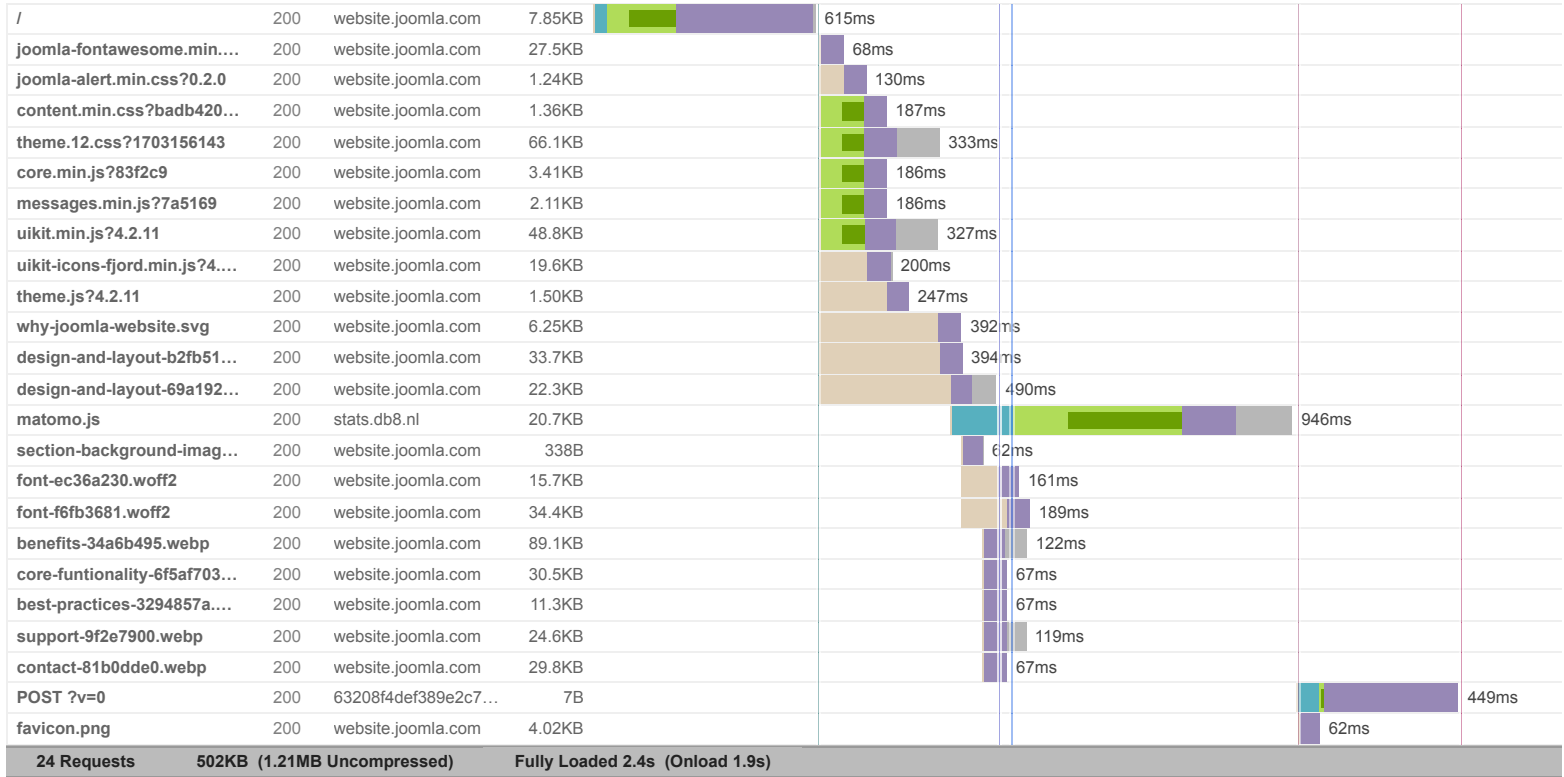


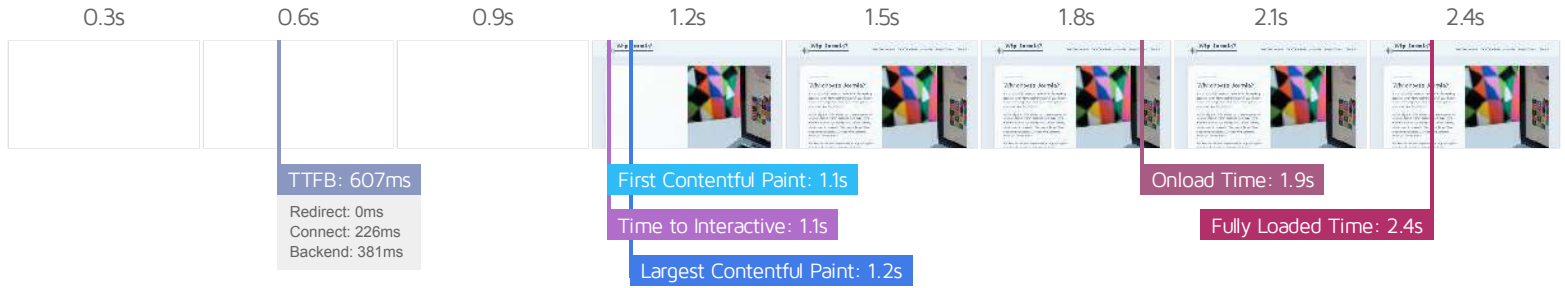
Page sizes and request counts



The waterfall chart displays the loading behaviour of your site in your selected browser. It can be used to discover simple issues such as 404's or more complex issues such as external resources blocking page rendering.

Why a Joomla Website? - Why a Joomla Website?





Performance Metrics

<p>First Contentful Paint</p> <p>How quickly content like text or images are painted onto your page. A good user experience is 0.9s or less.</p>	<p>OK, but consider improvement</p> <p>1.1s</p>	<p>Time to Interactive</p> <p>How long it takes for your page to become fully interactive. A good user experience is 2.5s or less.</p>	<p>Good - Nothing to do here</p> <p>1.1s</p>
<p>Speed Index</p> <p>How quickly the contents of your page are visibly populated. A good user experience is 1.3s or less.</p>	<p>Good - Nothing to do here</p> <p>1.1s</p>	<p>Total Blocking Time</p> <p>How much time is blocked by scripts during your page loading process. A good user experience is 150ms or less.</p>	<p>Good - Nothing to do here</p> <p>0ms</p>
<p>Largest Contentful Paint</p> <p>How long it takes for the largest element of content (e.g. a hero image) to be painted on your page. A good user experience is 1.2s or less.</p>	<p>Good - Nothing to do here</p> <p>1.2s</p>	<p>Cumulative Layout Shift</p> <p>How much your page's layout shifts as it loads. A good user experience is a score of 0.1 or less.</p>	<p>Good - Nothing to do here</p> <p>0</p>

Browser Timings

Redirect	0ms	Connect	226ms	Backend	381ms
TTFB	607ms	DOM Loaded	617ms	DOM Int.	1.1s
First Paint	1.1s	Onload	1.9s	Fully Loaded	2.4s

IMPACT	AUDIT	
Med	Eliminate render-blocking resources <small>FCP LCP</small>	Potential savings of 504ms
Med	Serve static assets with an efficient cache policy	Potential savings of 471KB
Med-Low	Use a Content Delivery Network (CDN)	19 resources found
Low	Use HTTP/2 for all resources	Potential savings of 160ms
Low	Avoid an excessive DOM size <small>TBT</small>	394 elements
Low	Avoid enormous network payloads <small>LCP</small>	Total size was 502KB
Low	Properly size images	Potential savings of 188KB
Low	Ensure text remains visible during webfont load <small>FCP LCP</small>	2 fonts found
Low	Reduce unused CSS <small>FCP LCP</small>	Potential savings of 90.4KB
Low	Reduce initial server response time <small>FCP LCP</small>	Root document took 381ms
Low	Avoid chaining critical requests <small>FCP LCP</small>	9 chains found
Low	Reduce unused JavaScript <small>LCP</small>	Potential savings of 31.6KB
N/A	Largest Contentful Paint element <small>LCP</small>	1,150 ms
N/A	Reduce JavaScript execution time <small>TBT</small>	53ms spent executing JavaScript
N/A	Avoid large layout shifts <small>CLS</small>	1 element found
N/A	Minimize main-thread work <small>TBT</small>	Main-thread busy for 257ms
N/A	Reduce the impact of third-party code <small>TBT</small>	Total size was 20.8KB
N/A	Avoid serving legacy JavaScript to modern browsers <small>TBT</small>	
N/A	User Timing marks and measures	